

# AMERICAN SOCIETY OF SAFETY ENGINEERS

## GREATER CHICAGO CHAPTER NEWSLETTER



OCTOBER 2005

### 2005-2006 Executive Committee

**President: Al Borzych**  
Phone: 630-705-4600 ext. 7184  
Email: aborzych@roman.com

**Vice President: Maribeth Anderson \***  
Phone: 773-894-7065  
Email: manderson@ohare.com

**2nd Vice President:  
Sanobeia C. Brima**  
Phone:  
Email: sLchristmas@hotmail.com

**Treasurer: Jim Smith**  
Phone: 708-450-3270  
Email: jsmith@alberto.com

**Secretary: Adrienne Bolbot**  
Phone: 773-695-5213  
Email: abolbot@truevalue.com

**Delegate: Marion Synowiec \***  
Phone: 312-381-3979  
Email: Marion\_Synowiec@ars.aon.com

**Delegate: Linda Rhodes \***  
Phone: 312-432-7083, ext.7208  
Email: lrhodes@transitchicago.com

**Newsletter :  
Leslie Batterson \***  
Phone: 312-558-8411  
Email: leslie.batterson@saralee.com

**Financial Secretary: Milton  
Vicenteno**  
Phone: 773-745-2247  
Email: milton.vicenteno@effem.com

**Awards & Honors: Dawn Boisvert \***  
Phone: 773-330-0723  
Email: dawnboisvert2003@yahoo.com

**Programs: Allan Kaufman**  
Phone: 773-279-2308  
Email: allank@alc-net.com

**Governmental Affairs: Todd Macumber**  
Phone: 312-627-6486  
Email: Todd.A.Macumber@marsh.com

**Membership: Mary Abbatacola**  
Email: mary.abbatacola@effem.com

**Historian: David Berg \***  
**Mgmt Practice Liaison: Rich  
Moscato \***  
**Construction Practice Liaison: Paul  
Kendall \***

\* Denotes Past Chapter President

REMEMBER TO VISIT OUR  
WEBSITE AT:  
[WWW.ASSECHGO.ORG](http://WWW.ASSECHGO.ORG)

OR LINK TO US  
FROM THE  
NATIONAL WEBSITE AT:  
[WWW.ASSE.ORG](http://WWW.ASSE.ORG)

## OCTOBER 11th MONTHLY MEETING NOTICE: GLOBAL OCCUPATIONAL EXPOSURE LIMITS (OELs) and "Hurricane Katrina and Rita" Goods Drive

As many safety professionals know, the OSHA PELs cover approximately 500 chemicals. However, most of these 500 + permissible exposure limits (PELs) are based on toxicological data from 1968. Alternatively, ACGIH has about 600 TLV standards that are updated annually, but the ACGIH standards are not mandatory. Given this situation, are the OSHA and ACGIH limits truly protecting US workers? Further complicating this situation is that there are thousands of chemicals used in workplaces for which the US has no standards.

This month's presentation will discuss over two years of research into Global Occupational Exposure Limits (OELs). Over 35 countries worldwide regulate over 3,500 occupational chemicals. Most of them are updated with the latest toxicological data every two to three years. How might this affect the safety professional in the US? How might it affect US manufacturing facilities overseas?

These questions and more will be answered during this lecture. The speaker will be Bob Brandys, PhD, MPH, PE, CSP, CIH, CMR of Occupational and Environmental Health Consulting Services, Inc., of Hinsdale, Illinois.

Bob Brandys is President of Occupational and Environmental Health Consulting Services, Inc. located in Hinsdale, Illinois. **OEHCS** is a full service safety and environmental compliance firm serving clients throughout the United States.

### Meeting Information:

11:30 am	Registration
12:00 pm	Lunch
1:00 pm	Presentation

2:00pm Executive Meeting  
(all are welcome to attend the Executive Meeting)

**Advanced Registration: \$20**

**Registration at the Door: \$25**

**Retired Members: \$10**

**Cucina Biagio Restaurant**, 7313 W. Lawrence, Harwood Heights, IL (708-867-4641).

*Directions: From Downtown, take I-90 West (toward O'Hare) to Harlem Avenue, exit South. Go approximately 3 miles to Lawrence, turn right (West) - on left side of street, about 1 block.*

RSVP to 773-894-7065, by October 9th and leave a message that includes your name, company name and phone number.

### Hurricane Katrina and Rita Goods Drive

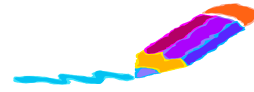
As members of the Greater Chicago Chapter of ASSE, the Executive Committee decided that we needed to do our part in the efforts of Hurricane Katrina for the many families that have been displaced to our surrounding communities. We are conducting a Goods Drive during our next meeting for those in need. These goods will be distributed by interested members to local shelter's and homes collecting for these families.

Donated items can be brought to our next meeting on October 11, 2005.

These should include: Diapers, Formula, Wipes, Shampoo, Toiletries, Toothpaste, Toothbrushes, Deodorant, Shaving Supplies, Personal Products, New packaged T-Shirts and New packaged Underwear or small new children's toys.

## PRESIDENT'S REPORT

By: Al Borzych



The Greater Chicago Chapter will be making an extra effort to the families and survivor's of both Hurricane Katrina and Hurricane Rita. We will be collecting durable goods and get them distributed to local charities and shelters to assist those displaced by the natural disasters in their communities. We feel that every bit makes a difference in these peoples lives, as safety professionals, this our time to help out. If you would like to find out how to volunteer more in needed areas, please visit the ASSE National Web Site at [www.asse.org](http://www.asse.org) for the many opportunities that we as Safety Professionals can do to help.

Al Borzych, President, Greater Chicago Chapter

### NATIONAL ASSE OFFERS TWO TECHNICAL AUDIO CONFERENCE CALLS THIS MONTH

ASSE's next Technical Audio Conference call is directed at the U.S. Occupational Safety and Health Administration (OSHA) and provides an overview about the regulatory and enforcement aspects of OSHA, the inspection process, and the impact on SH&E Professionals.

**"Managing OSHA Inspections to Reduce Liability and Improve Safety Performance "** should be of interest to SH&E Professionals involved with OSHA federal and state-plan-state compliance operations. We did a similar call for members of the Mining Practice Specialty earlier this year about MSHA and the evaluations were overwhelmingly positive. Our speaker is Adele Abrams and you would be hard-pressed to find a better quality speaker than Adele. Our goal is to have a high-caliber speaker talking about an issue of significance for SH&E professionals.

This program is only \$75 for members is recognized for BCSP CoC credit and includes the following:

1. Several articles about OSHA enforcement and compliance.
2. A 90 minute conference call presentation being given by Adele Abrams (nationally known attorney with significant experience with OSHA compliance and inspections. You can view Adele's [bio Here](#)).
3. The emphasis of the call will be on the OSHA inspection process, enforcement, and compliance.
4. A powerpoint presentation.
5. The ability to submit your questions via e-mail to the speakers and moderator.
6. Following the call you will receive a CD recording of the call.

**Save the date: October 19, 2005**

During March of 2005, ASSE hosted a technical audio conference call addressing excavation and focused on the reaffirmed A10.12 Standard "Safety Standards for Excavation". A number of SH&E pros have inquired if there could be a presentation about the **general issue of excavation**.

Our presentation, **"Safety Requirements for Excavation,"** is not about the A10.12 Standard, but is an extension of what was presented in March about best practices with excavation. The direction of the call will be different with a focus on the general issues and practices addressing excavation. For those participating in the call, you would receive the following:

1. A 90 minute conference call presentation being given by Mike Hayslip([read Mike's bio here](#)), following its completion. His emphasis will be on best practices and procedures to address excavation hazards and exposures on the worksite. Mike received excellent evaluations as a result of the March call and there have numerous requests for him to do a call about the comprehensive issue of excavation.
2. A powerpoint presentation about excavation.
3. The ability to submit your questions via e-mail to the speaker.
4. Articles and papers addressing the general issue of excavation.
5. You also get a C.D. of the call after it has taken place.
6. You will also get a C.D. from the first call that took place in March. This will you will have three total hours of quality presentation material about excavation including the A10.12 Standard.
7. We will still provide you with a copy of the reaffirmed A10.12-2005 Standard

**Save the date: October 27, 2005**

## Have A Nice Trip? See you Next Fall

Charlie Chaplin, The Three Stooges, Jerry Lewis, and more recently Cosmo Kramer and Homer Simpson all had something in common. They were all masters of slips, trips and falls. This is one of the most common occurrences of injuries to employees today?

Slips, trips, and falls constitute the majority of general industry accidents. They cause 15% of all accidental deaths, and are second only to motor vehicles, as a cause of fatalities. The OSHA standards for walking and working surfaces apply to all permanent places of employment, except where only domestic, mining, or agricultural work is performed.

There are many situations that can cause slips, trips, and falls, such as ice, wet spots, grease, polished floors, loose flooring or carpeting, uneven walking surfaces, clutter, electrical cords, open desk drawers and filing cabinets, and damaged ladder steps. The controls needed to prevent these hazards are usually obvious, but too often ignored. It is important to try keeping walkways and stairs clear of scrap and debris; coiling up extension cords, lines, and hoses when not in use; keeping electrical and other wires out of the way; wearing lug soles in icy weather; clearing parking lots, stairs, and walkways in snowy weather; and using salt/sand as needed. These are a few things, which, incorporated into a good training program, can help reduce these type of incidents.

OSHA's general requirements for walking working surfaces are found under 29CFR 1910.22. Below, is a link to a checklist which should help you do an assessment in your workplace.

<http://www.osha.gov/SLTC/smallbusiness/chklist.html#walking>

### **OFF-Site Problems**

Walking working surfaces are also an important cause of off-site work injuries. How many times have you or a friend or relative, talked about hurting themselves on a slip, trip or fall? Do you talk to your employees about taking the same safety precautions off-site as they do at work? In areas which get snow and ice slip and falls are a major cause of strains, sprained muscles and joints, and broken bones. Wet and slippery walkways in and around the home, are a cause for similar injuries. Have you ever reached-up for something off a shelf using a chair instead of the proper ladder?

Today as the greatest portion of the population become the baby boomers, we are starting to see a significant rise in these off-site work injuries. While, these injuries do not affect your worker compensation insurance, they can and will affect your health insurance and the organizations productivity. By having an effect program which addresses slips, trips, and falls, you can help reduce both workplace and off-site incidents. Reducing incidents will affect both **productivity** and the company's **bottom-line**.

*Allan Kaufman is Director of The Compliance Resource Center. [www.thecrcenter.com](http://www.thecrcenter.com)*

## **ASSE'S SEMINARFEST IN LAS VEGAS.....JANUARY 22-28, 2006**

With 45 seminars ranging from one to three days in length, SeminarFest offers essential technical, management, and skill development topics for the Safety, Health, and Environmental professional. Whether you join us for one day or the full week, this event will not only satisfy your comprehensive continuing education needs but also give you insight on leading SH&E topics.

**Here's How It Works** SeminarFest 2006 offers 45 seminars in one location, the Flamingo Las Vegas. You may register for seminars as needed to complete training and earn up to 5.0 CEUs/COCs or 7.0 CM points. Each seminar is individually priced, and discounts are given as you increase the number of seminars you select. Please refer to the fee schedule on page 30 for details.

**Go Beyond Quality Education** Our special events create networking opportunities to help you make the most of your SeminarFest experience. Please refer to the center page of this brochure for a full schedule of networking opportunities, highlights include: Two receptions; Three complimentary lunches; two luncheon presentations

**About The Location** The Flamingo Las Vegas is a resort property centrally located on the Las Vegas strip. It has a variety of restaurants, a fully equipped fitness center with a full-service spa, four pools and complimentary parking. Visit [www.asse.org](http://www.asse.org) for more registration and more information.

## GOVERNMENTAL AFFAIRS UPDATE

If you would like to get immediate email updates of the full text, please contact Todd Macumber, our Governmental Affairs Chairperson. He will add you to the email distribution of all of the latest recaps for both State and Federal, as they are made available.

Email: Todd.A.Macumber@marsh.com

### COMING IN NEXT MONTHS NEWSLETTER...

- **MORE GOVERNMENTAL AFFAIRS RECAP**
- **MORE MEMBERS IN THE NEWS**
- **PRACTICE SPECIALTIES—WHY JOIN?**

**PLEASE SEND NEWSLETTER STORIES, PROMOTIONS, SAFETY PHOTO'S, TECHNICAL ARTICLES OR IDEAS TO:**

**Leslie Batterson, Newsletter Editor**  
at [leslie.batterson@saralee.com](mailto:leslie.batterson@saralee.com)

## SAVE THE DATES

**November 8th**—Greater Chicago Chapter Luncheon Meeting—Tim Murphy from Chubb Insurance on the topic of Fleet Safety

**December 13th** -Chapter Luncheon Meeting

**January 10th** - Chapter Luncheon Meeting

**February 14th**—Chapter Luncheon Meeting

**March 14th**- Chapter Luncheon Meeting

**April 11th**—Chapter Luncheon Meeting

**May 9th**—Elections and Chapter Meeting

**June 13th** - Chapter Luncheon Meeting

## ASSE'S NATIONAL MANUFACTURING SAFETY SYMPOSIUM—ATLANTA, GA

You're not just a safety professional...you are a **manufacturing safety professional**. Your business has special needs, different concerns and other perspectives that other SH&E professionals don't have. *This is your conference*. ASSE brings you the Manufacturing Safety Symposium. A two-day educational opportunity designed especially for the manufacturing safety professional.....See [www.asss.org](http://www.asss.org) for more details....

## MEMBER RECOGNITIONS

- Chris Patton the current Region V—RVP has been appointed the Deputy VP—COMRA.
- Our own current President, Al Borzych has been appointed ARVP for Region V.

### WELCOME NEW MEMBERS:

Carol Parnell	Alcan Global Pharmaceutical
Richard Lambert	Chicago Transit Authority
Brian Rempert	Keter Consultants
Das Antanu	MSDS Writer LLC
Linda Kurtz	Wrigley Manufacturing Co.
Chris Backos	Metal Management
Lynn Mazurowski	Sicure Group LLC

